

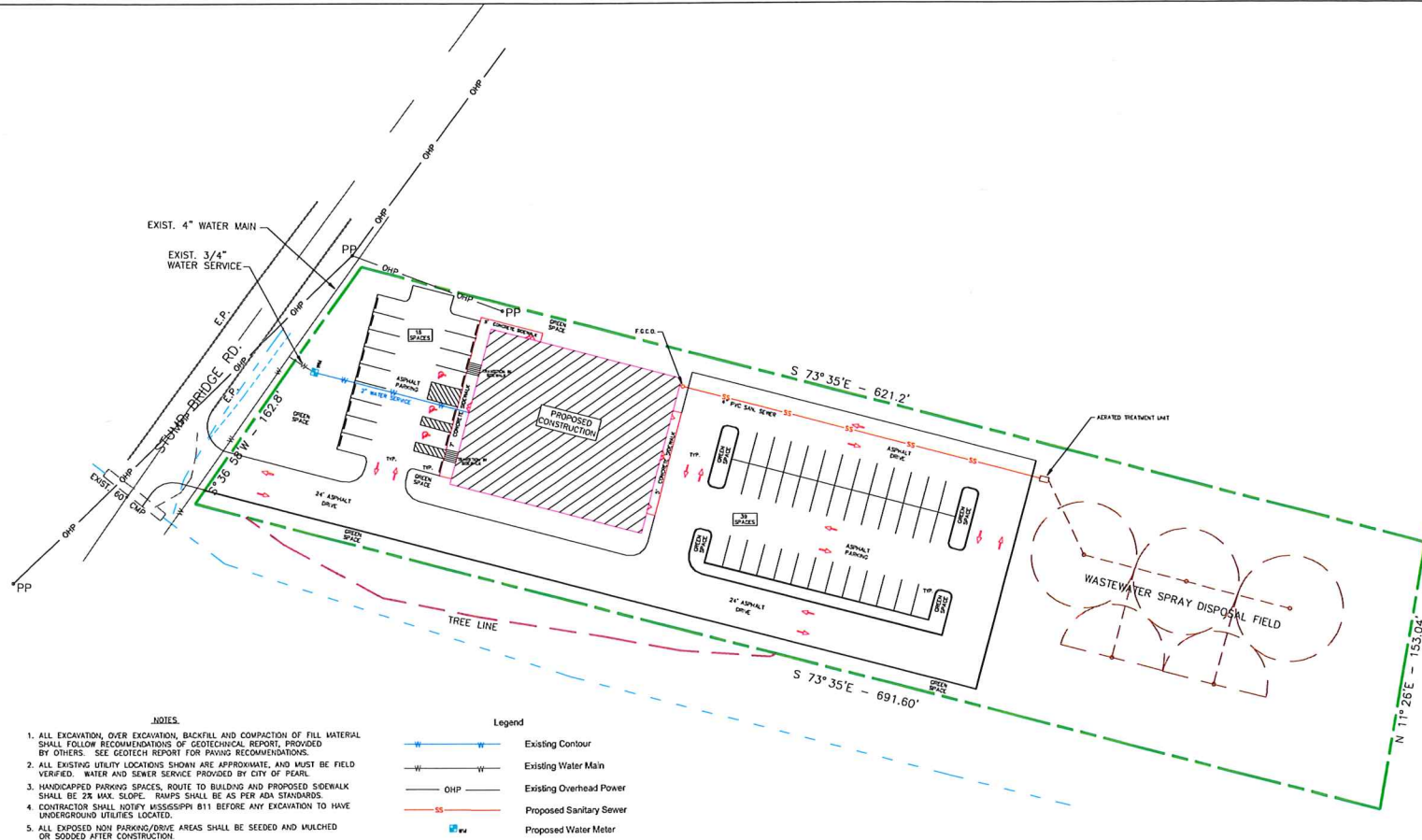
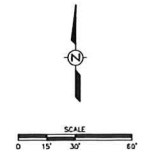
| | | | |
|------|-------------------------|-----|---------------|
| | | | |
| | | | |
| | | | |
| | | | |
| 0 | ISSUED FOR REVIEW | MJA | 12/3/19 |
| REV. | DESCRIPTION OF REVISION | BY | REVISION DATE |

| |
|----------------------|
| SCALE: SHOWN |
| DRAWN: MJA |
| REVIEWED: MJA |
| PROJECT MANAGER: MJA |
| DATE: 12/3/19 |

Alford and Associates
Consulting Engineers
 7412 Sulte B Sivell Road
 Byram, Mississippi 39272

Existing Site Topo
 W.I.U.F.C. Community Center
 Canton MS

| |
|---------------|
| PROJECT No. |
| CAD FILE NAME |
| DRAWING |
| C-1 |



- NOTES**
1. ALL EXCAVATION, OVER EXCAVATION, BACKFILL AND COMPACTION OF FILL MATERIAL SHALL FOLLOW RECOMMENDATIONS OF GEOTECHNICAL REPORT, PROVIDED BY OTHERS. SEE GEOTECH REPORT FOR PAVING RECOMMENDATIONS.
 2. ALL EXISTING UTILITY LOCATIONS SHOWN ARE APPROXIMATE, AND MUST BE FIELD VERIFIED. WATER AND SEWER SERVICE PROVIDED BY CITY OF PEARL.
 3. HANDICAPPED PARKING SPACES, ROUTE TO BUILDING AND PROPOSED SIDEWALK SHALL BE 2% MAX. SLOPE. RAMPS SHALL BE AS PER ADA STANDARDS.
 4. CONTRACTOR SHALL NOTIFY MISSISSIPPI 811 BEFORE ANY EXCAVATION TO HAVE UNDERGROUND UTILITIES LOCATED.
 5. ALL EXPOSED NON PARKING/DRIVE AREAS SHALL BE SEEDED AND MULCHED OR SOODED AFTER CONSTRUCTION.
 6. SUBGRADE PREPARATION AND PAVING/REINFORCEMENT REQUIREMENTS SHALL BE PER GEOTECHNICAL REPORT.

Legend

| | |
|--|-------------------------|
| | Existing Contour |
| | Existing Water Main |
| | Existing Overhead Power |
| | Proposed Sanitary Sewer |
| | Proposed Water Meter |

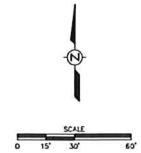
| REV. | DESCRIPTION OF REVISION | BY | REVISION DATE |
|------|-------------------------|-----|---------------|
| 0 | ISSUED FOR REVIEW | MJA | 12/3/19 |

| |
|----------------------|
| SCALE: SHOWN |
| DRAWN: MJA |
| REVIEWED: MJA |
| PROJECT MANAGER: MJA |
| DATE: 12/3/19 |

Alford and Associates
Consulting Engineers
 7112 Suite B Shively Road
 Byram, Mississippi 39272

Site/Utility Plan
 W.I.U.F.C. Community Center
 Canton MS

| | |
|---------------|-----|
| PROJECT No. | |
| CAD FILE NAME | |
| DRAWING | C-2 |



- NOTES.**
1. ALL EXCAVATION, OVER EXCAVATION, BACKFILL AND COMPACTION OF FILL MATERIAL SHALL FOLLOW RECOMMENDATIONS OF GEOTECHNICAL REPORT, PROVIDED BY OTHERS. SEE GEOTECH REPORT FOR PAVING RECOMMENDATIONS.
 2. HANDICAPPED PARKING SPACES, ROUTE TO BUILDING AND PROPOSED SIDEWALK SHALL BE 2% MAX. SLOPE. RAMPS SHALL BE AS PER ADA STANDARDS.
 3. CONTRACTOR SHALL NOTIFY MISSISSIPPI B11 BEFORE ANY EXCAVATION TO HAVE UNDERGROUND UTILITIES LOCATED.
 4. PROPOSED SPOT ELEVATIONS ARE TO FINISHED PAVING GRADE.
 5. ALL EXPOSED NON PARKING/DRIVE AREAS SHALL BE SEEDED AND MULCHED OR SODED AFTER CONSTRUCTION.
 6. SUBGRADE PREPARATION AND PAVING/REINFORCEMENT REQUIREMENTS SHALL BE PER GEOTECHNICAL REPORT.
 7. PROPERTY LOCATED IN ZONE X, AREAS OF MINIMAL FLOOD HAZARD, ACCORDING TO FEMA FLOOD MAP 28049C0277H, EFFECTIVE DATE 11/18/09.

Legend

| | |
|--|---------------------------|
| | Existing Contour |
| | Proposed Contour |
| | Spot Elevation |
| | Drainage Direction |
| | Existing / Proposed Ditch |
| | Site Fence |

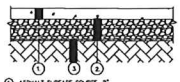
| REV. | DESCRIPTION OF REVISION | BY | REVISION DATE |
|------|-------------------------|-----|---------------|
| 0 | ISSUED FOR REVIEW | MJA | 12/3/19 |

| |
|----------------------|
| SCALE: SHOWN |
| DRAWN: MJA |
| REVIEWED: MJA |
| PROJECT MANAGER: MJA |
| DATE: 12/3/19 |

Alford and Associates
Consulting Engineers
 7112 Suite B Sivell Road
 Byram, Mississippi 39272

Grading/Drainage Plan
 W.I.U.F.C. Community Center
 Canton MS

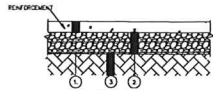
| | |
|---------------|-----|
| PROJECT No. | |
| CAD FILE NAME | |
| DRAWING | C-3 |



- ① ASPHALT SURFACE COURSE, 2"
- ② ASPHALT BASE COURSE, 4"
- ③ REQUIRED SUBGRADE - CONTACT TO MAX STD. FOOTING RESIST IN 8" LFTS TO LIME TREATED SUBGRADE EXTENDING TO 1" PAST CURB OR EDGE FINISHMENT

LIGHT DUTY ASPHALT PAVEMENT

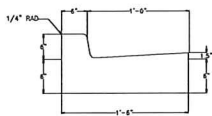
SEE SUBGRADE PREPARATION AND FINISHING SPECIFICATIONS SHALL BE FOR DETENTION BASIN



- ① ASPHALT SURFACE COURSE, 2"
- ② ASPHALT BASE COURSE, 4"
- ③ REQUIRED SUBGRADE - CONTACT TO MAX STD. FOOTING RESIST IN 8" LFTS TO LIME TREATED SUBGRADE EXTENDING TO 1" PAST CURB OR EDGE FINISHMENT

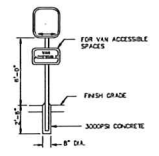
HEAVY DUTY ASPHALT PAVEMENT

SEE SUBGRADE PREPARATION AND FINISHING SPECIFICATIONS SHALL BE FOR DETENTION BASIN



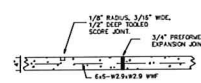
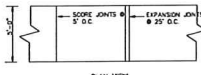
NOTE:
DUMMY JOINTS WILL BE MADE AT 10' INTERVALS.
EXPANSION JOINTS WILL BE MADE AT 40' INTERVALS
AND PRECUT JOINT MATERIAL TEMPLATES WILL
BE USED IN ALL EXPANSION JOINTS.

CURB AND GUTTER



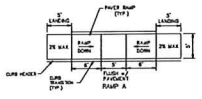
- 1. HANDICAP PARKING SIGN SHALL CONFORM TO ALL GOVERNING REGULATIONS
- 2. HANDICAP SIGN SHALL BE 12" X 18" X .060", FASTENED WITH TWO EACH 3/8" COLUMN BOLTS AND WASHERS. POST SHALL BE 1 1/2" X 1 1/2" HEAVY DUTY GALVANIZED
- 3. CONTRACTOR SHALL INSTALL A HANDICAP PARKING SIGN AT EACH HANDICAP PARKING SPACE

HANDICAP SIGN



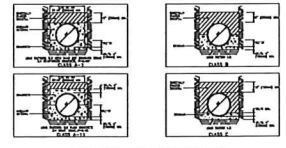
CONTRACTOR MAY USE WELDED WIRE FABRIC OR CONCRETE CONTAINS FIBROUS REINFORCEMENT.
CONCRETE SHALL HAVE 3000 PSI AT 28 DAYS

SIDEWALK



GRATE INLET

SCALE: NONE



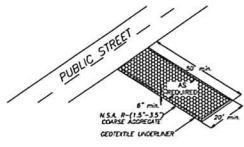
BEDDING DETAILS

SCALE: NONE

| PIPE MATERIAL | CLASS BEDDING |
|---------------------|---------------|
| REINFORCED CONCRETE | C |
| STANDARD DUCT | C |
| DUCTILE IRON | C |
| STEEL | B |

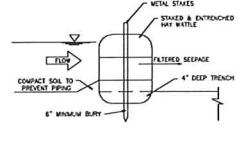
*UNLESS OTHERWISE SPECIFIED

PIPE BEDDING SCHEDULE*



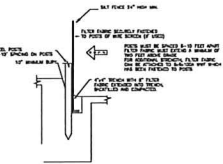
- THE ERT SHALL BE MAINTAINED IN A CONDITION WHICH WILL PREVENT TRACKING OR FLOW OF MUD DURING PUBLIC WORKS OF ANY TYPE MAY REQUIRE PERIODIC TOP DRESSING WITH 1.5-3.5 MM STONE AS CONDITIONS DEMAND AND REPAIR AND/OR CLEAN OUT OF ANY STRUCTURE DUE TO TRUCK TRAFFIC. ALL MATERIALS SPILLED, DROPPED, BLOWN, OR TRACKED FROM VEHICLES OR SET INTO STORMS OR INTO STORM DRAINS MUST BE REMOVED IMMEDIATELY.
- WHEELS MUST BE CLEANED TO REMOVE MUD PRIOR TO EXITING DRIVE AND/OR PROPERTY. IF AN AREA BEING A DRIVEWAY IS IN THE DRIVEWAY AREA WITH CRUSHED STONE WHICH DRIVES INTO AN APPROVED SEGMENT TRAP OR SEGMENT BASKET.

CONSTRUCTION EGRESS DETAIL

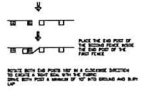


HAY WATTLE INSTALLATION

SCALE: SHOWN



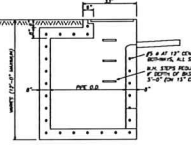
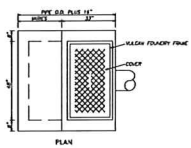
SILT FENCE TYPICAL SECTION



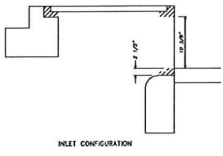
ATTACHING TWO SILT FENCES

SILT FENCE MAINTENANCE PLAN

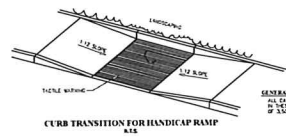
- CURB SHALL BE DESIGNED TO PROVIDE THE MOVEMENT OF SEDIMENT INTO ALL STORM DRAIN APPURTENANCES AND PUBLIC STREETS UNTIL THE SUPERVISING MATERIAL (DIS)CHARGING AREA SURFACE IS APPLIED.
- A DRAIN INLET SEDIMENT TRAP WITH PERIMETER SILT FENCING OR PROPERLY INSTALLED MATERIAL BARRIERS IS THE RECOMMENDED METHOD OF INLET PROTECTION. SEDIMENT WILL BE REMOVED FROM THE ENLARGED DRAIN INLET SEDIMENT TRAP AND REDUCED TO THE ORIGINAL DEPTH WHEN SEDIMENT ACCUMULATION HAS REACHED HALF THE DEPTH OF THE TRAP.
- ALL SEDIMENT AND SEDIMENT CONTROL MEASURES WILL BE CHECKED FOR SEDIMENT AND OVERFLOW, IMMEDIATELY FOLLOWING EVERY RUNOFF PRODUING RAINFALL, BUT IN NO CASE, LESS THAN EVERY WEEK. ANY NECESSARY REPAIRS WILL BE MADE IMMEDIATELY TO MAINTAIN THE MEASURES PERFORMANCE AS DESIGNED.
- SEDIMENT WILL BE REMOVED FROM THE UPSTREAM FACE OF THE SILT FENCE WHEN IT REACHES A MAXIMUM EX-POSED (7) FEET AT THE FENCE. THE FENCE WILL BE REPLACED AS NECESSARY TO MAINTAIN A BARRIER.
- SILT FENCE POSTS SHALL BE ALTERNATING STEEL.



CURB INLET DETAIL



INLET CONFIGURATION



CURB TRANSITION FOR HANDICAP RAMP

SITE DETAILS

| REV. | DESCRIPTION OF REVISION | BY | REVISION DATE |
|------|-------------------------|-----|---------------|
| 0 | ISSUED FOR REVIEW | MJA | 12/3/19 |

| |
|----------------------|
| SCALE: SHOWN |
| DRAWN: MJA |
| REVIEWED: MJA |
| PROJECT MANAGER: MJA |
| DATE: 12/3/19 |

Alford and Associates
Consulting Engineers
7112 Suite B Sivall Road
Byram, Mississippi 39272

| |
|--|
| Site Details |
| W.I.U.F.C. Community Center Canton MS |

| |
|---------------|
| PROJECT No. |
| EAD FILE NAME |
| DRAWING |
| C-4 |